

ahead RC Crawler V306 Front Cab Assembly Manual



Required tools and hardware

Tools

- 1.5mm Hex Driver
- 2.0mm Hex Driver
- 2.5mm Hex Driver
- Needle Nosed Pliers
- Instant Glue
- Hot Glue

Electronics

- 5mm LED White x3
- 5mm LED Red x2
- 3mm LED Orange x2

Hardware

Hardware	Quantity	Check ✓
M2*5 Socket head	19	
M2*8 Socket head	3	
M2*10 Socket head	11	
M3*10 Socket head	3	
M3*15 Socket head	12	
M3*25 Socket head	2	
M3*10 Button head (BH)	2	
M3*15 Countersunk (CS)	2	
M3*3 Grub screw (GS)	4	
M3*10 Grub screw (GS)	2	
M3*20 Grub screw (GS)	2	
1*6 Dowel Pin	2	

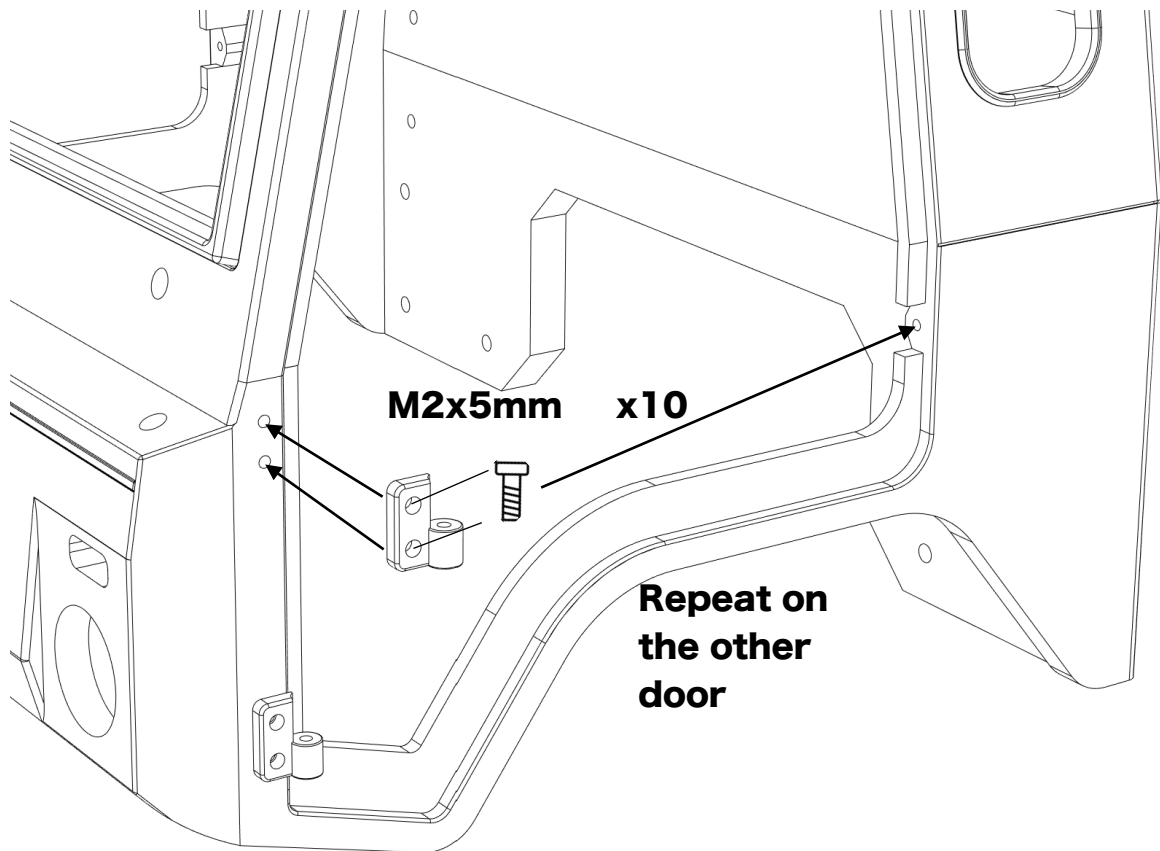
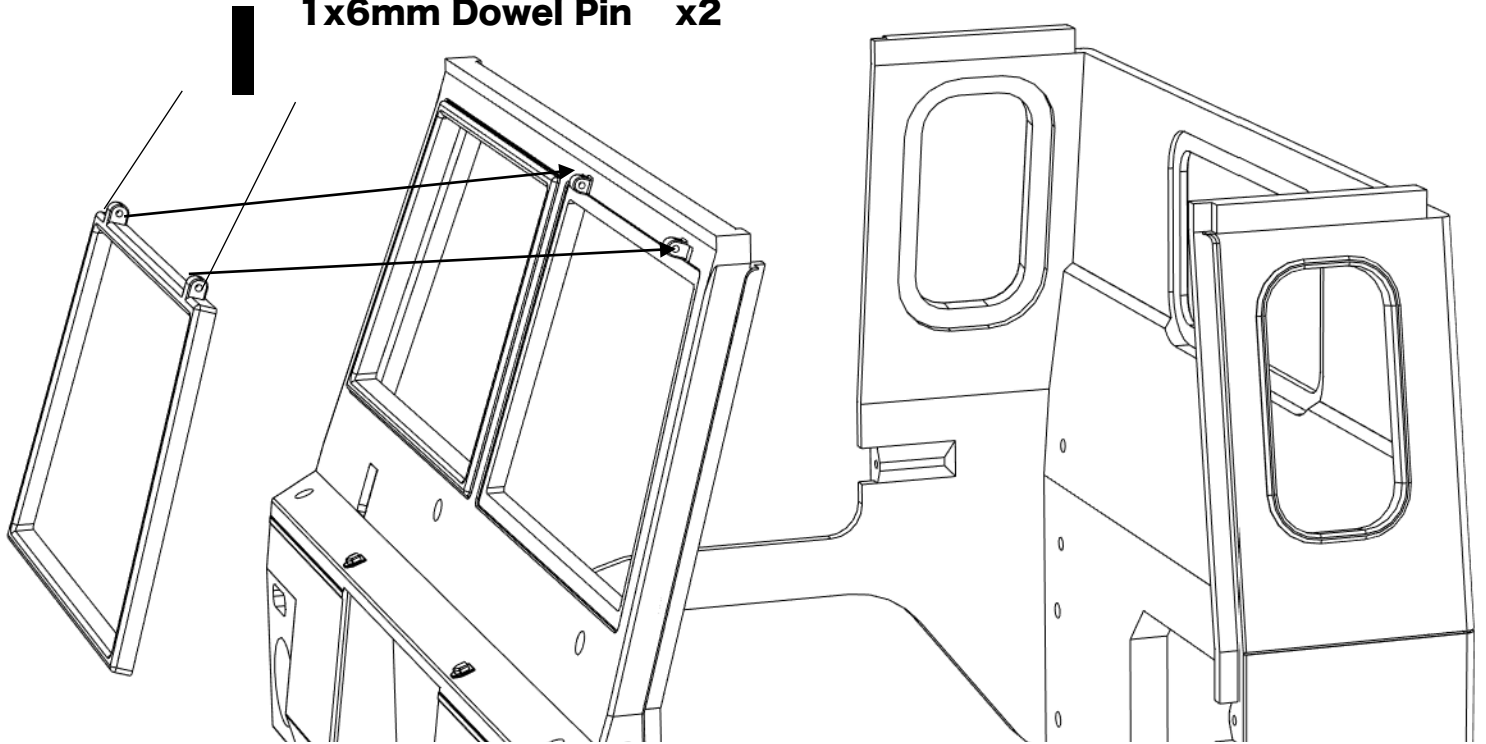
Before you begin

- Be sure to read through the manual and familiarise yourself with the instructions
- Visualise a plan to assemble all the pieces
- Make sure you have all of the hardware and tools
- Be sure to have enough instant glue
- Dry fit all parts before painting and assembling

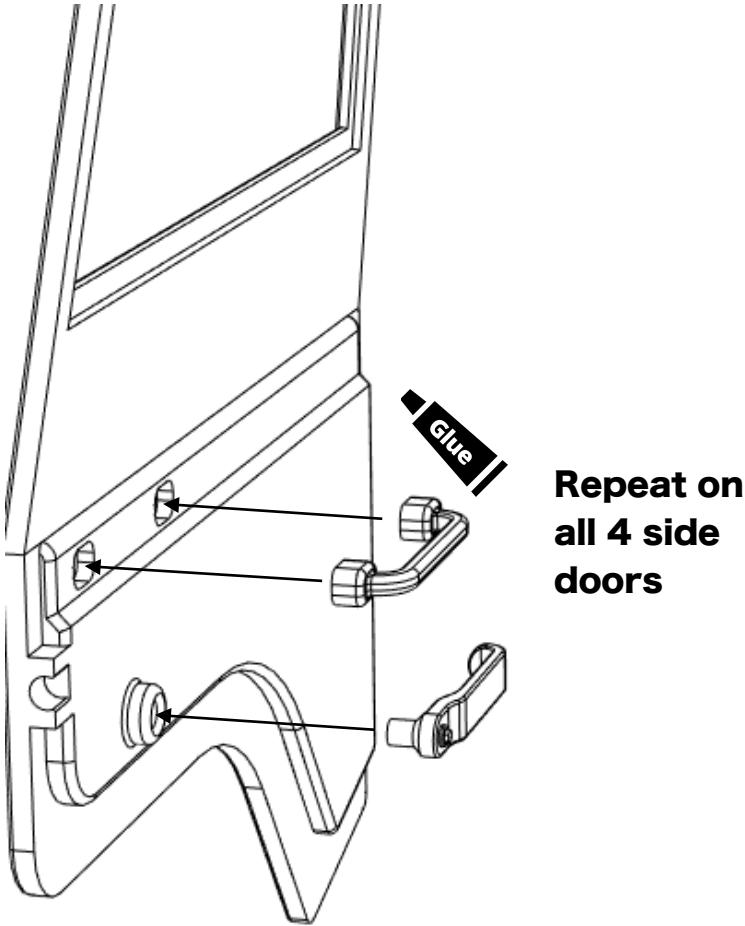
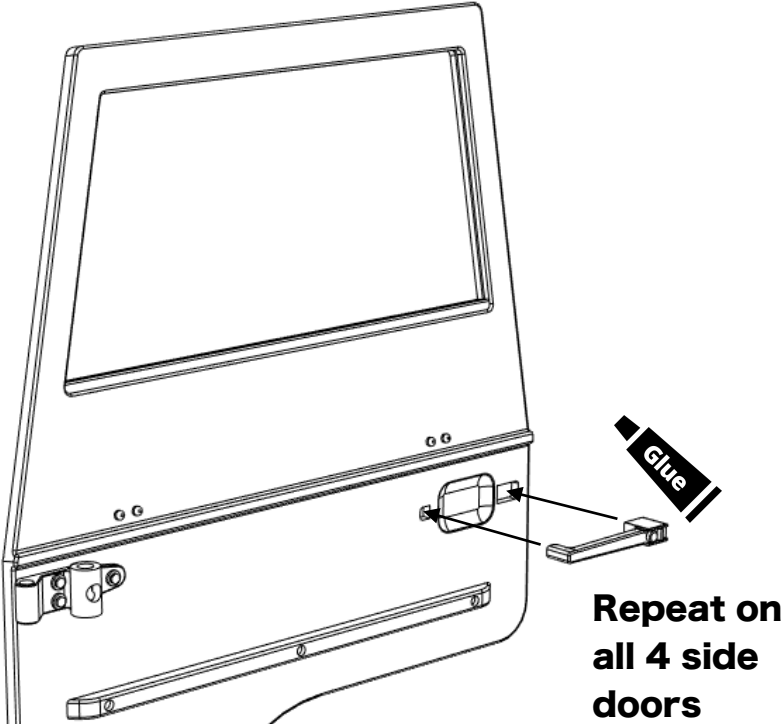
Tip: It will help to paint all of the parts before final assembly

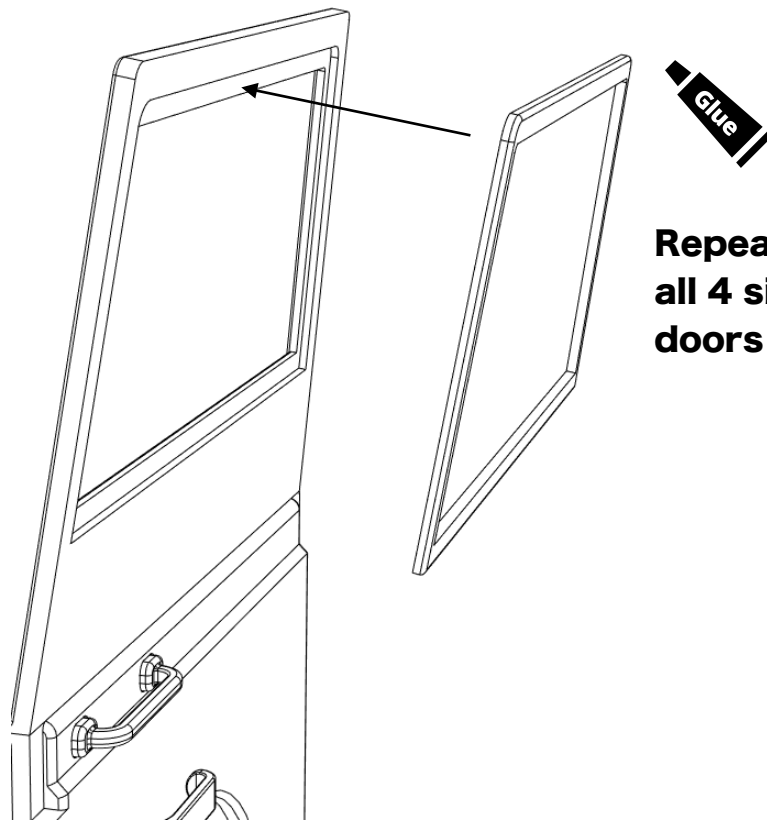
Installing the windshield

1x6mm Dowel Pin x2



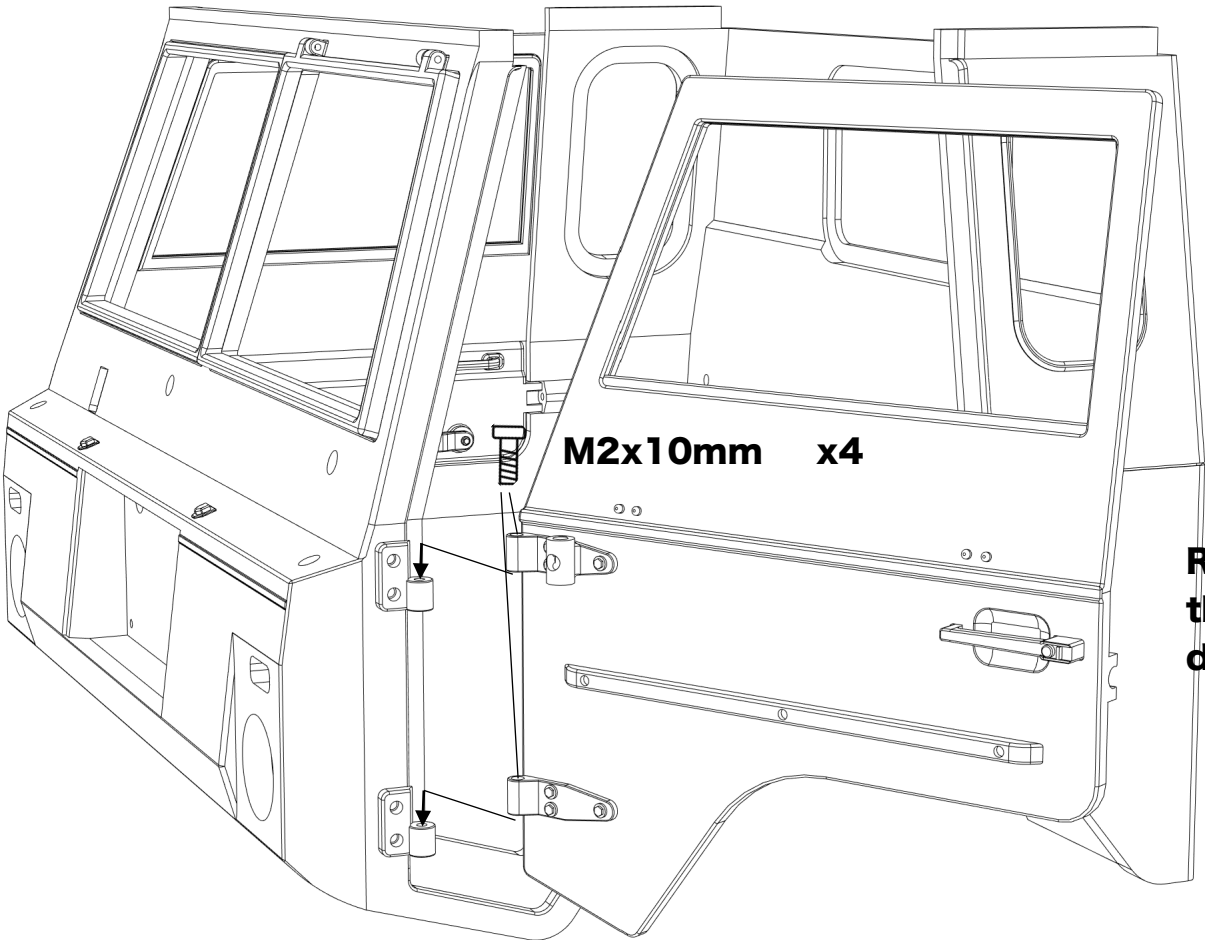
Assembling the doors





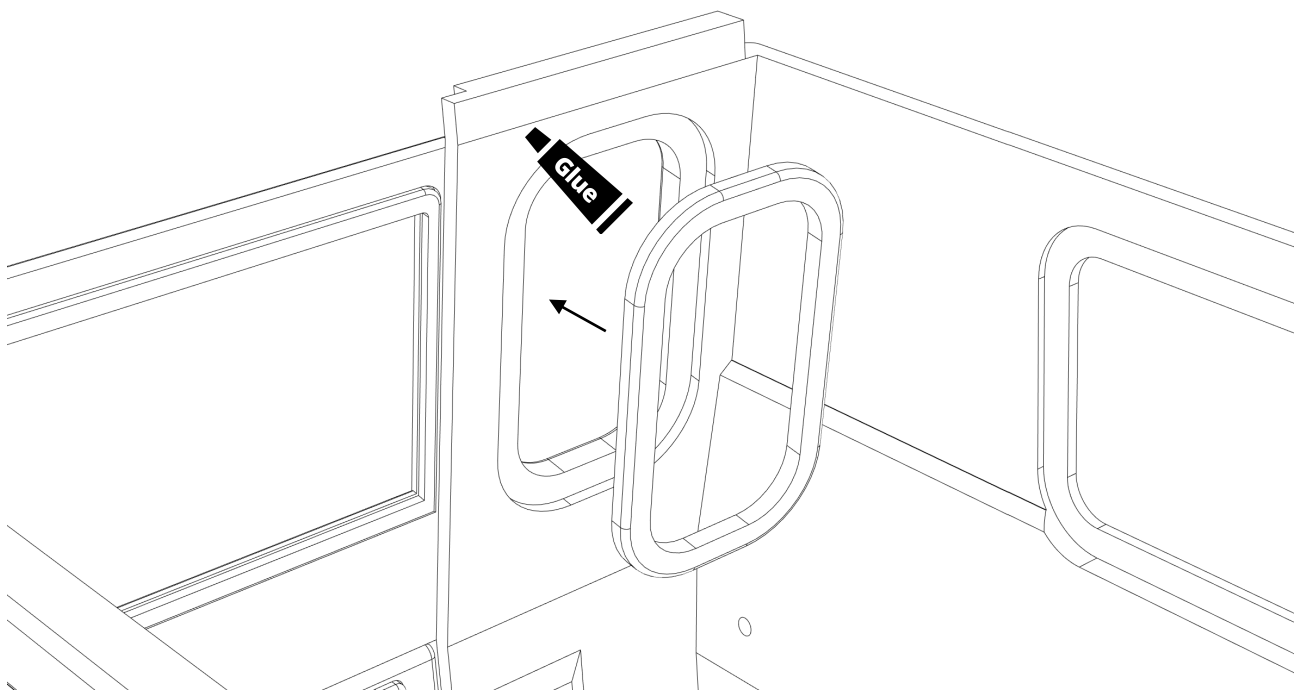
**Repeat on
all 4 side
doors**

Installing the doors

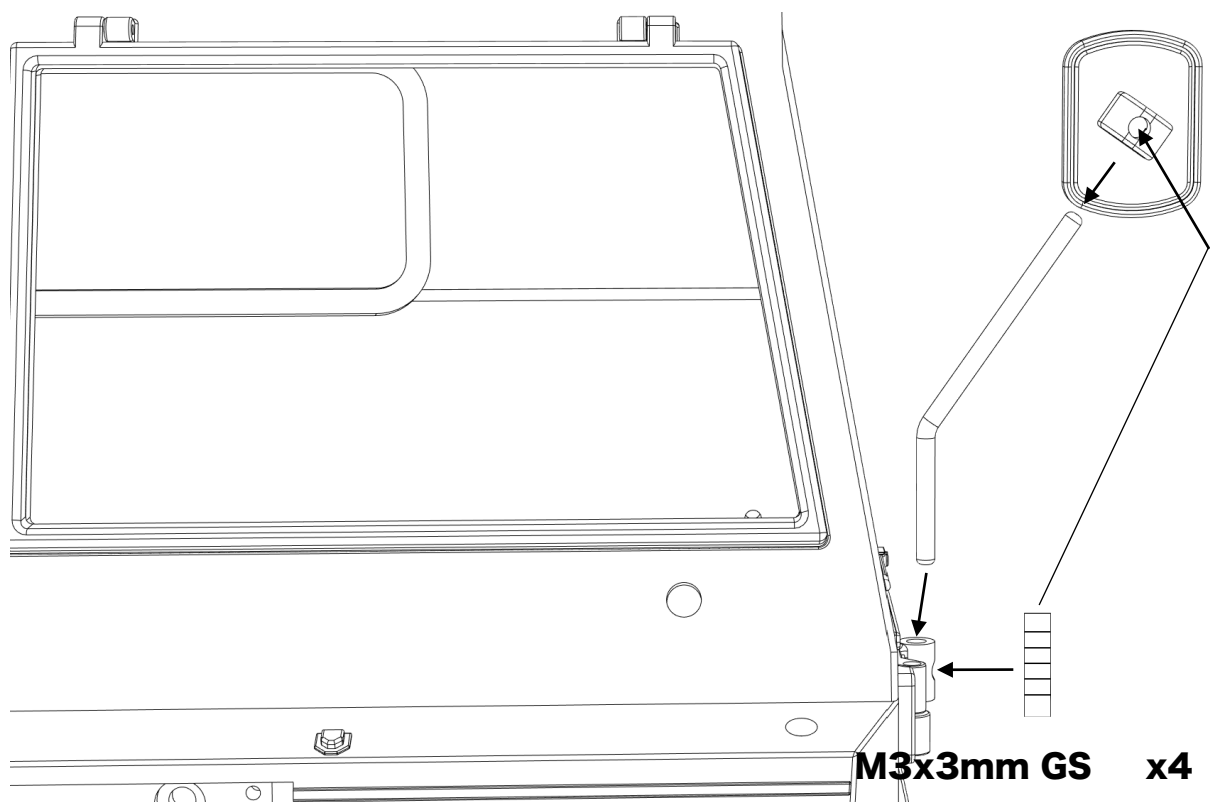
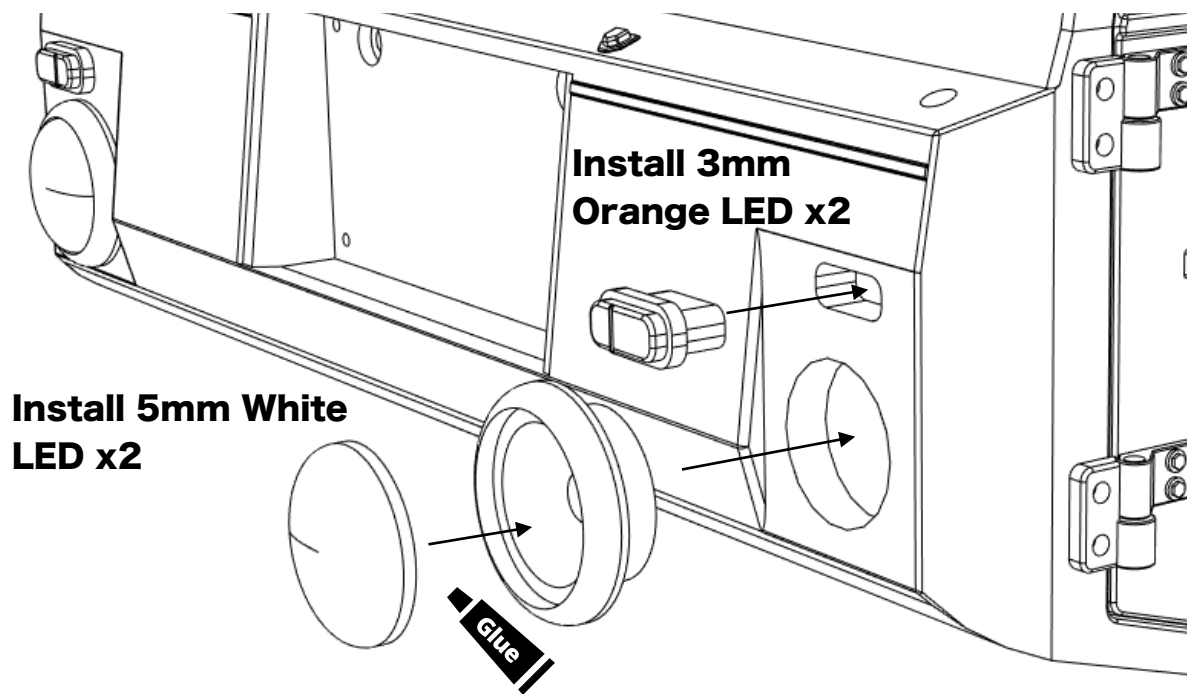


**Repeat on
the other
door**

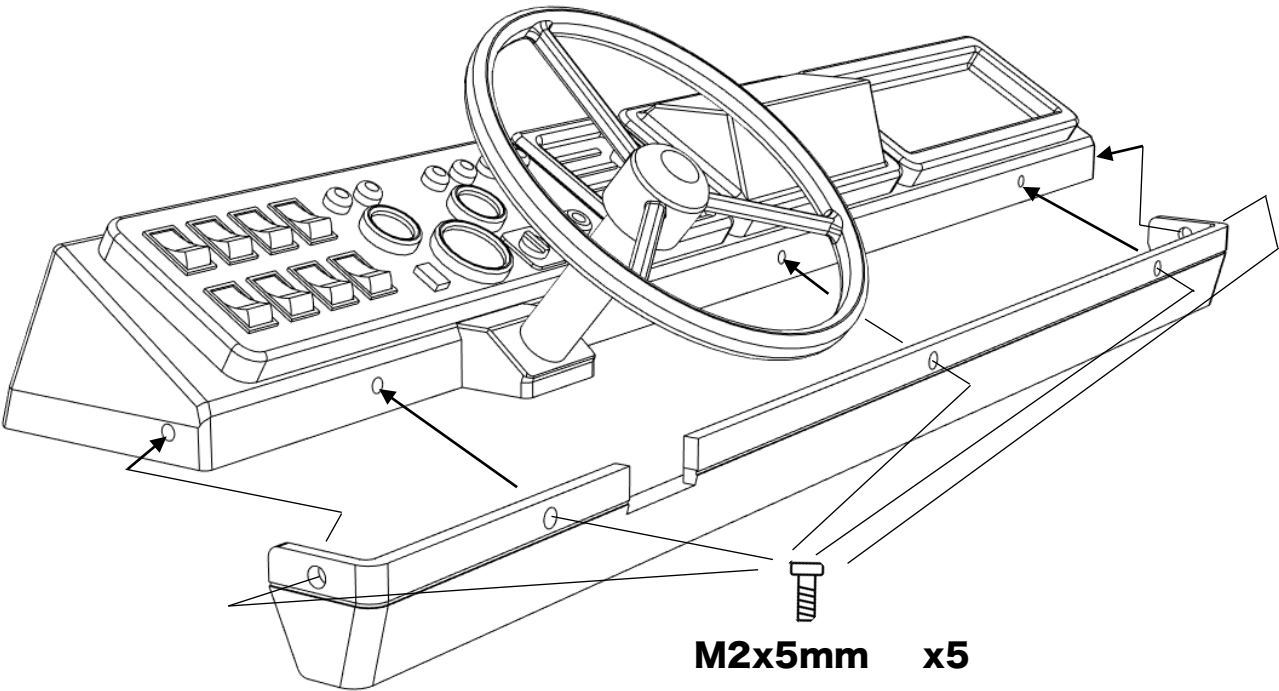
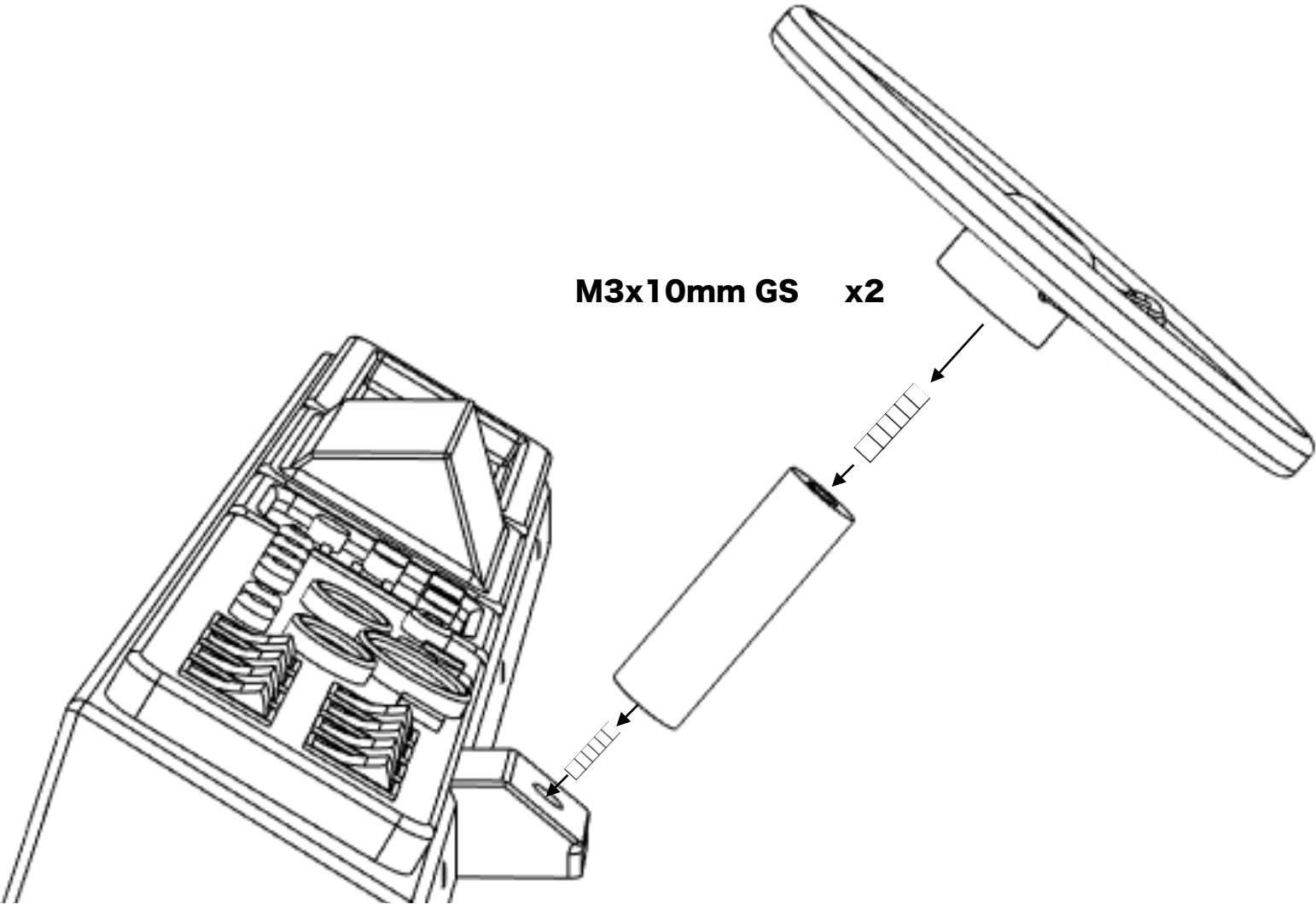
Installing cab window presses and windshield

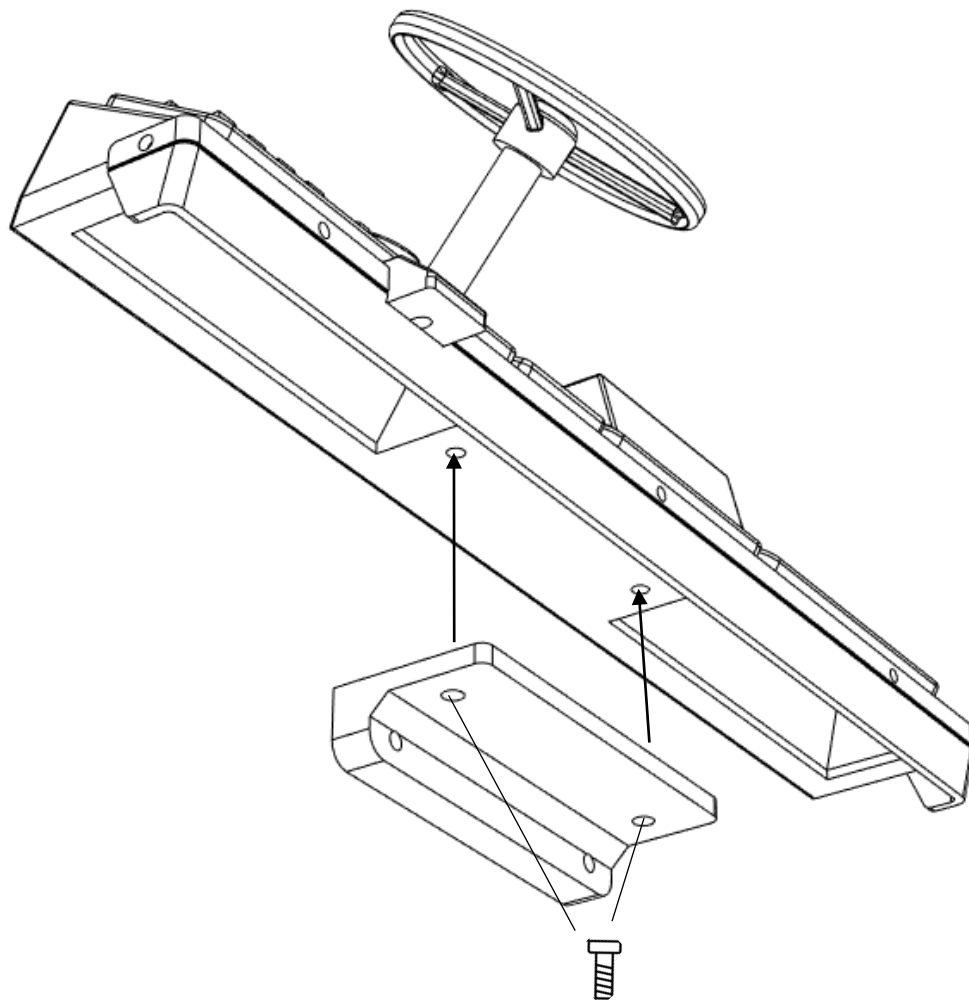


Installing the lights and mirrors

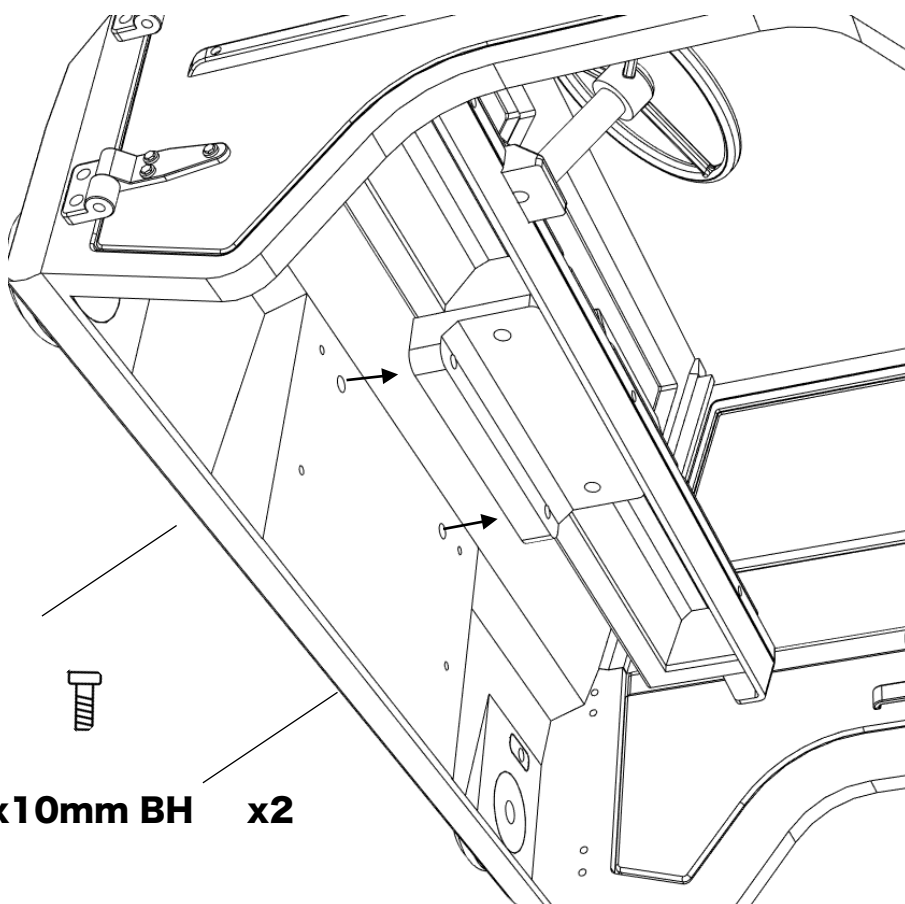


Assembling the interior dashboard





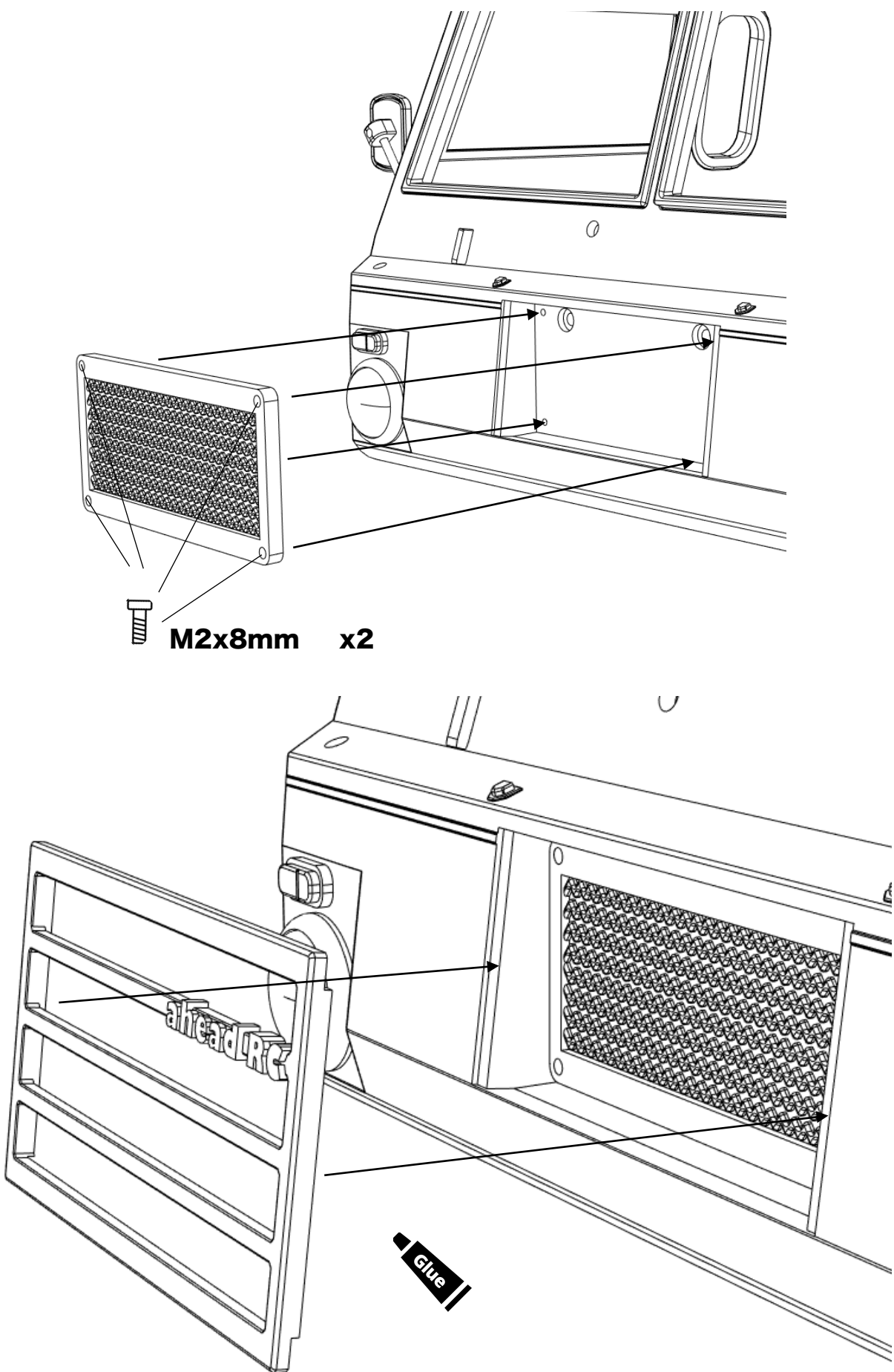
M3x10mm x2



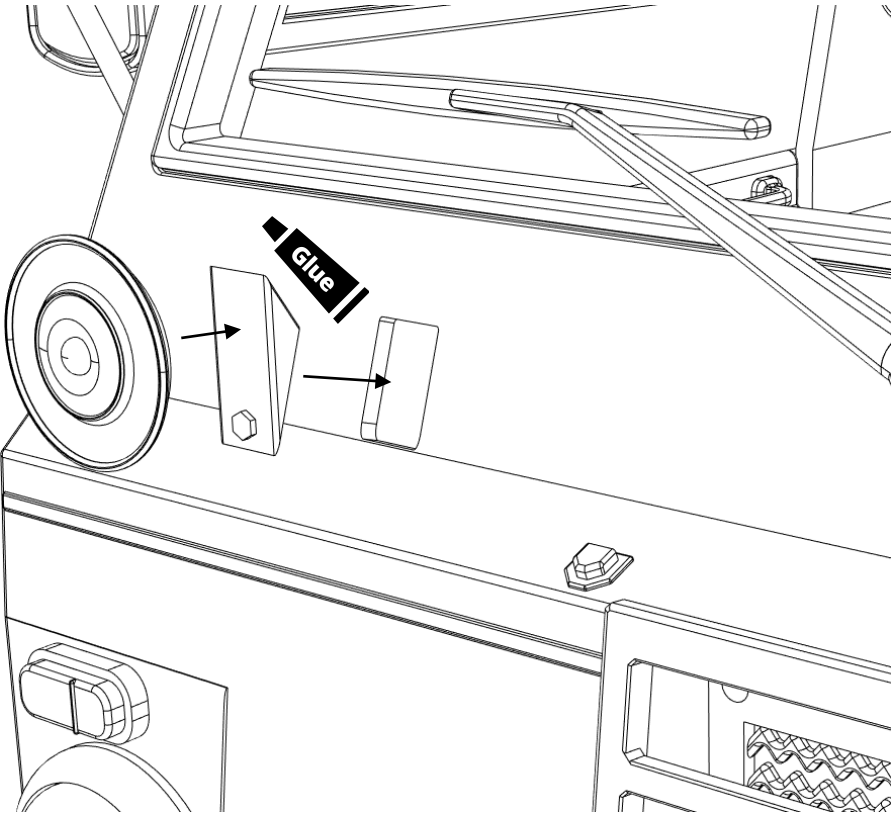
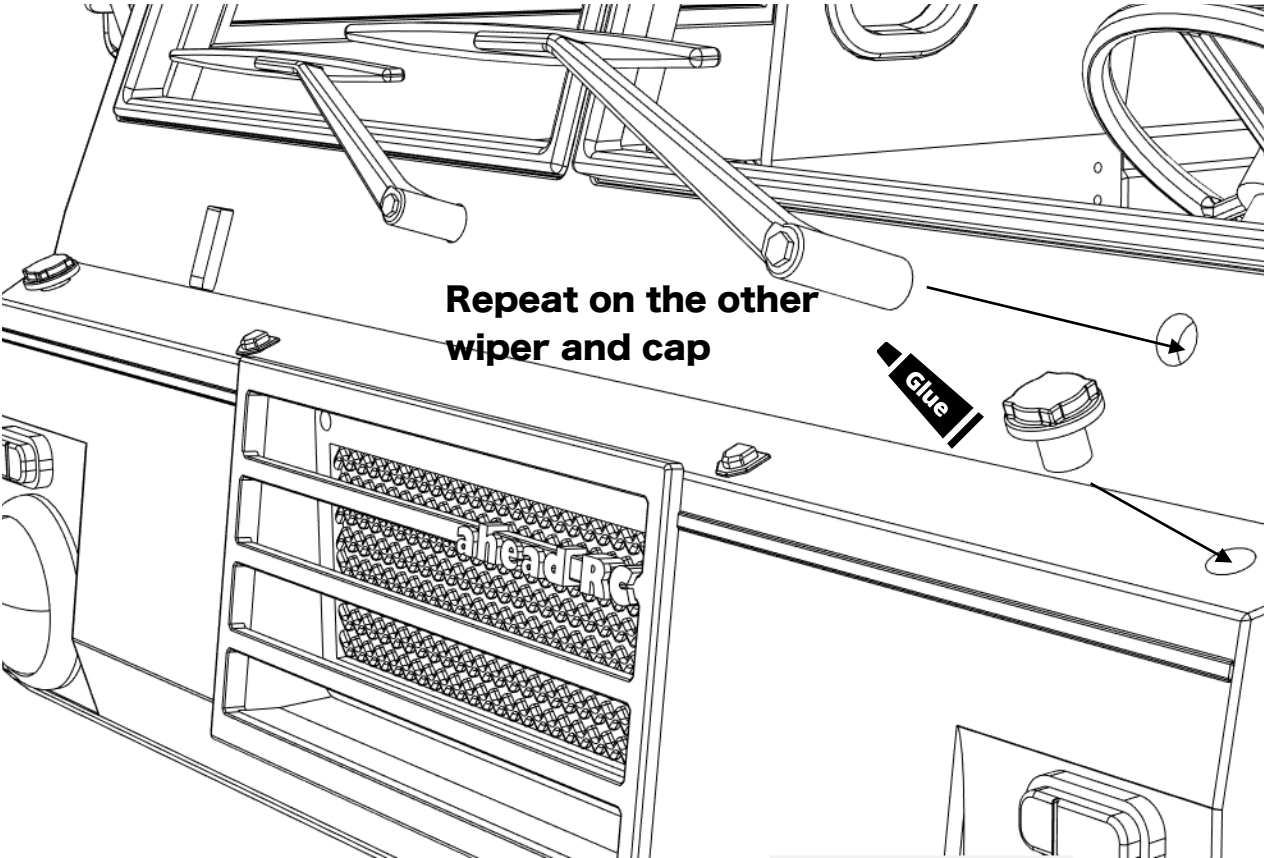
M3x10mm BH x2

ahead RC

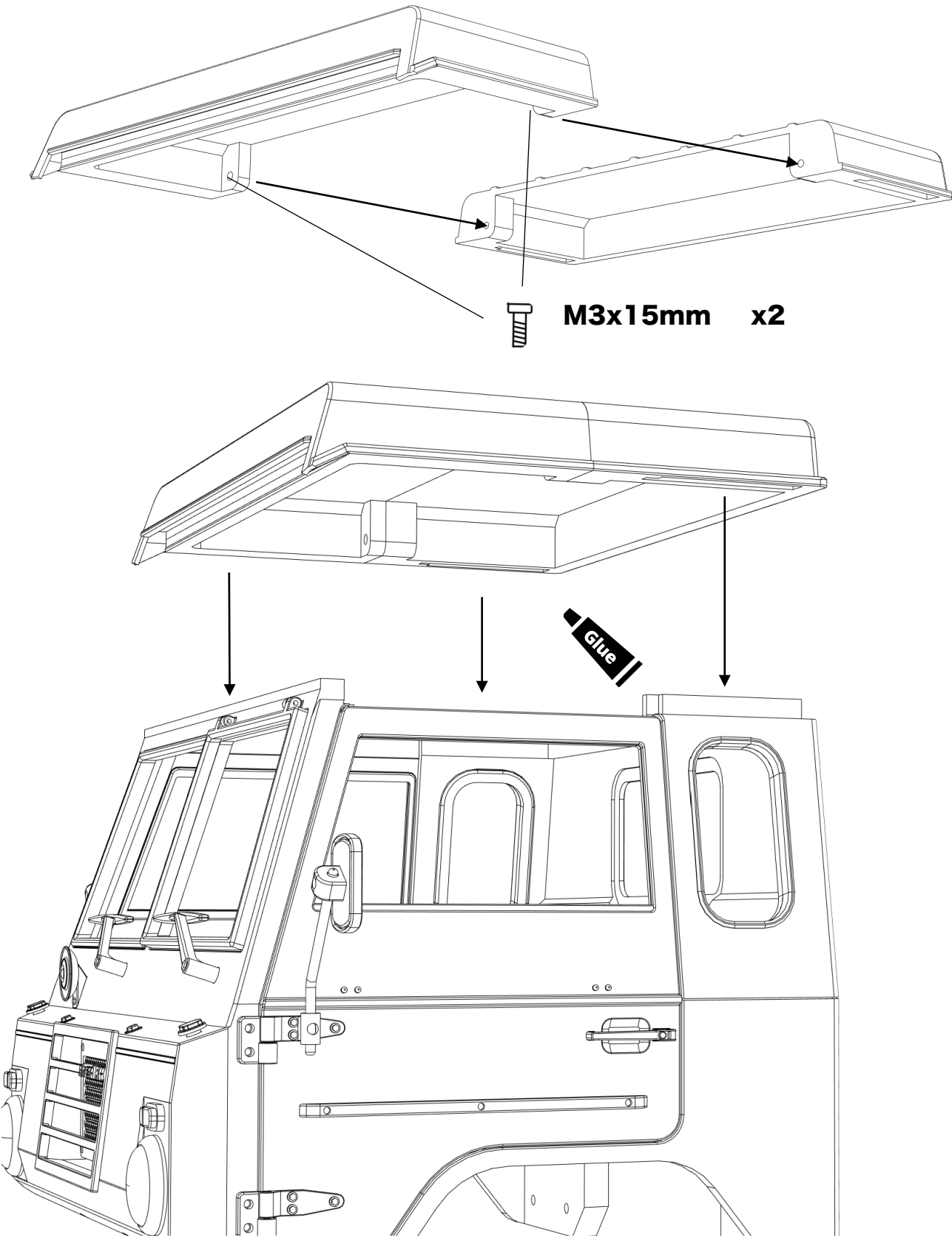
Installing the radiator and grille



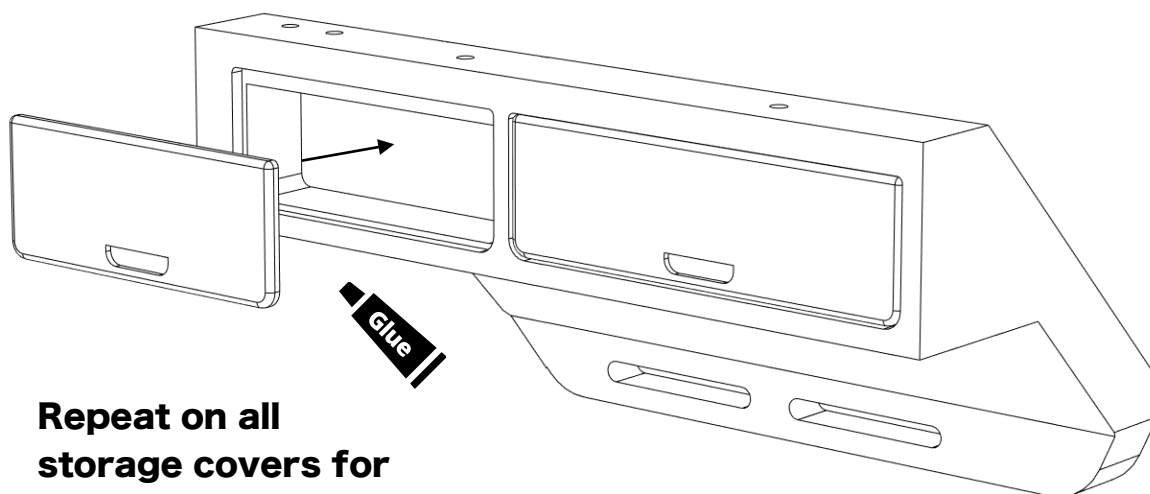
Installing the details



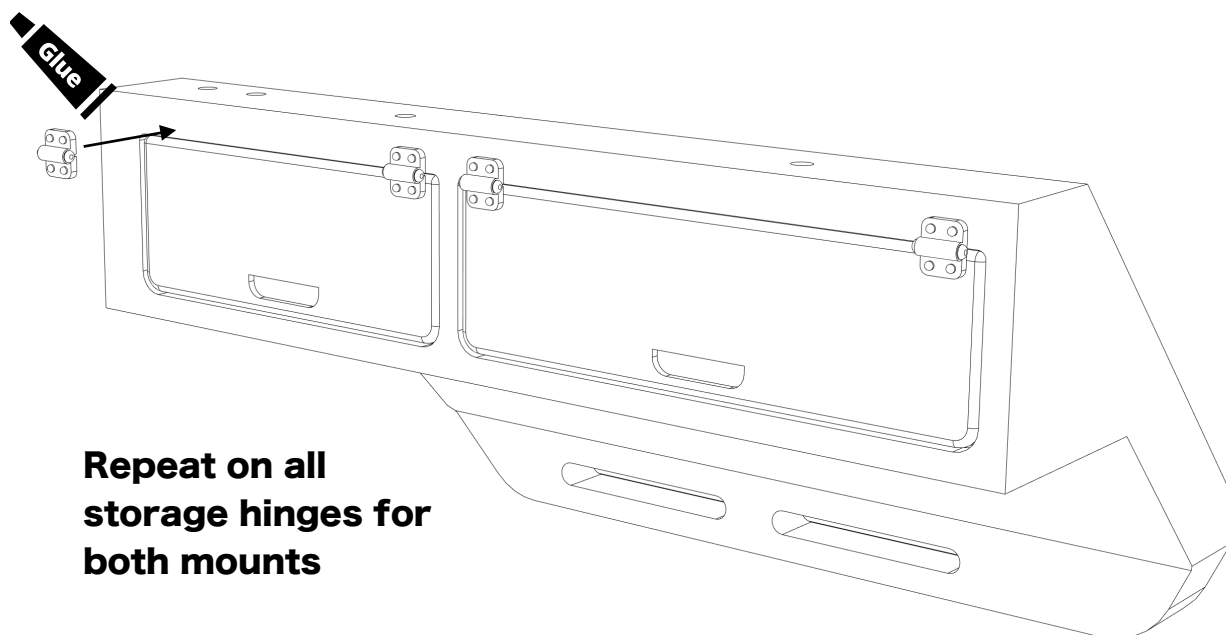
Assembling and installing the roof



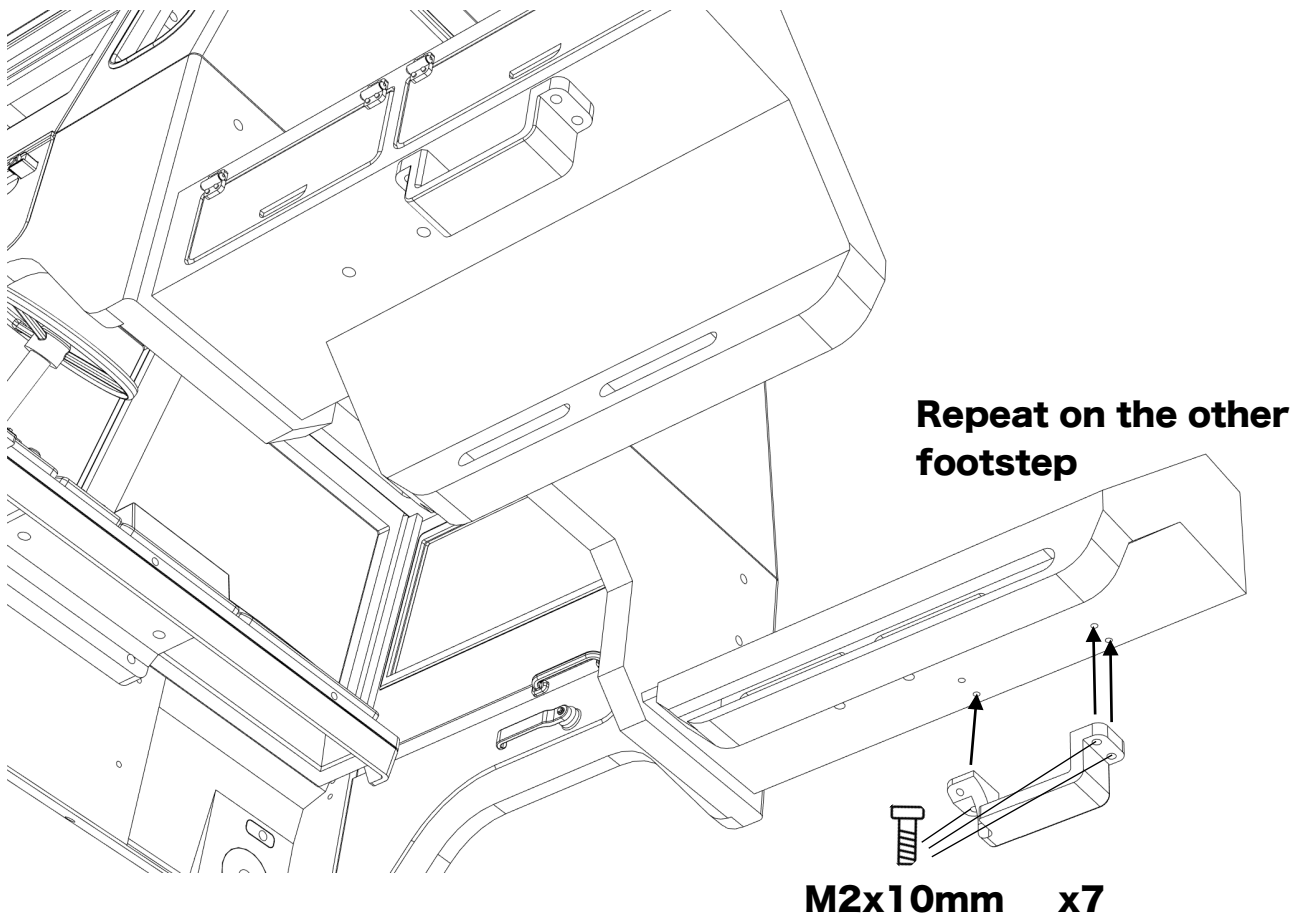
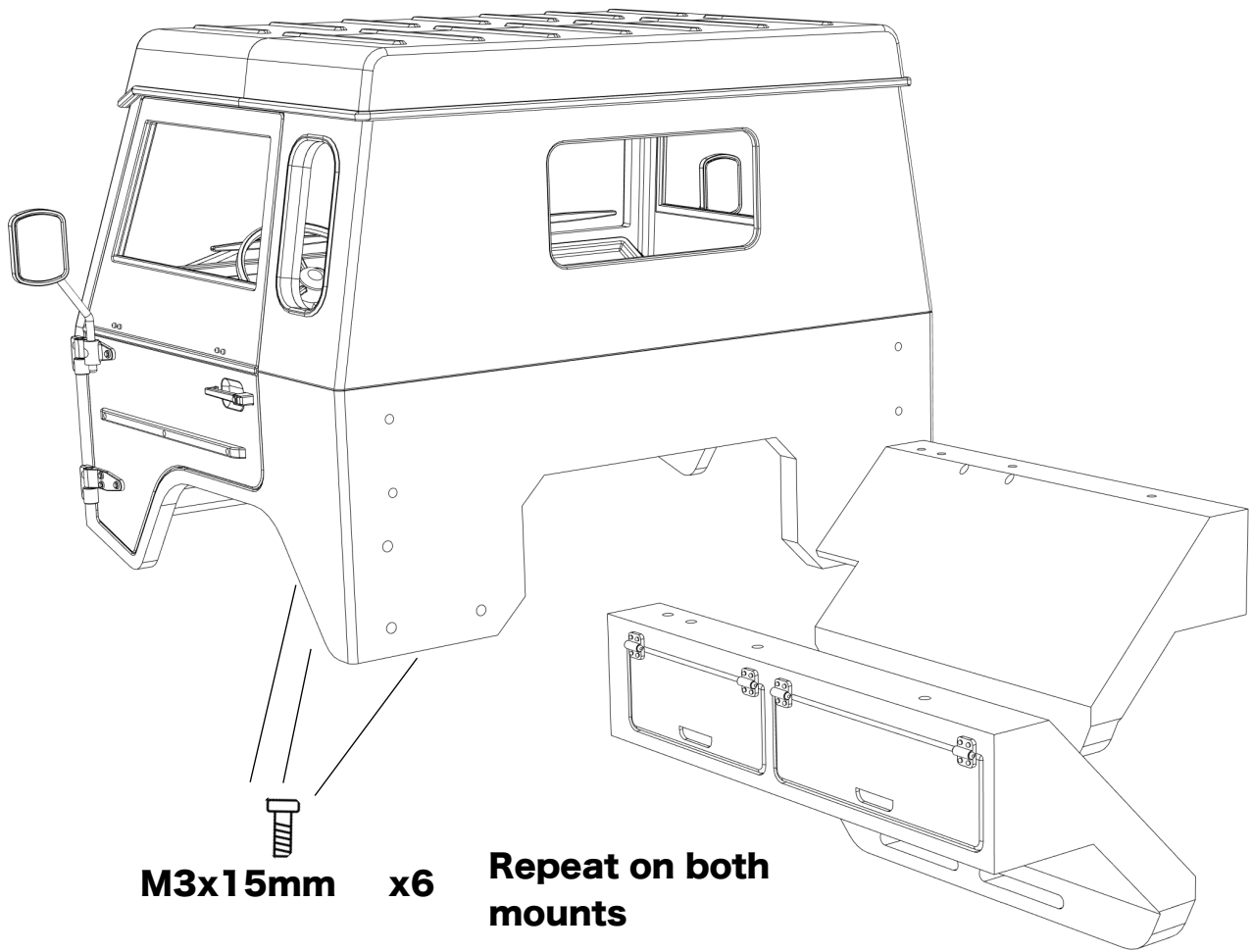
Assembling the chassis mounts



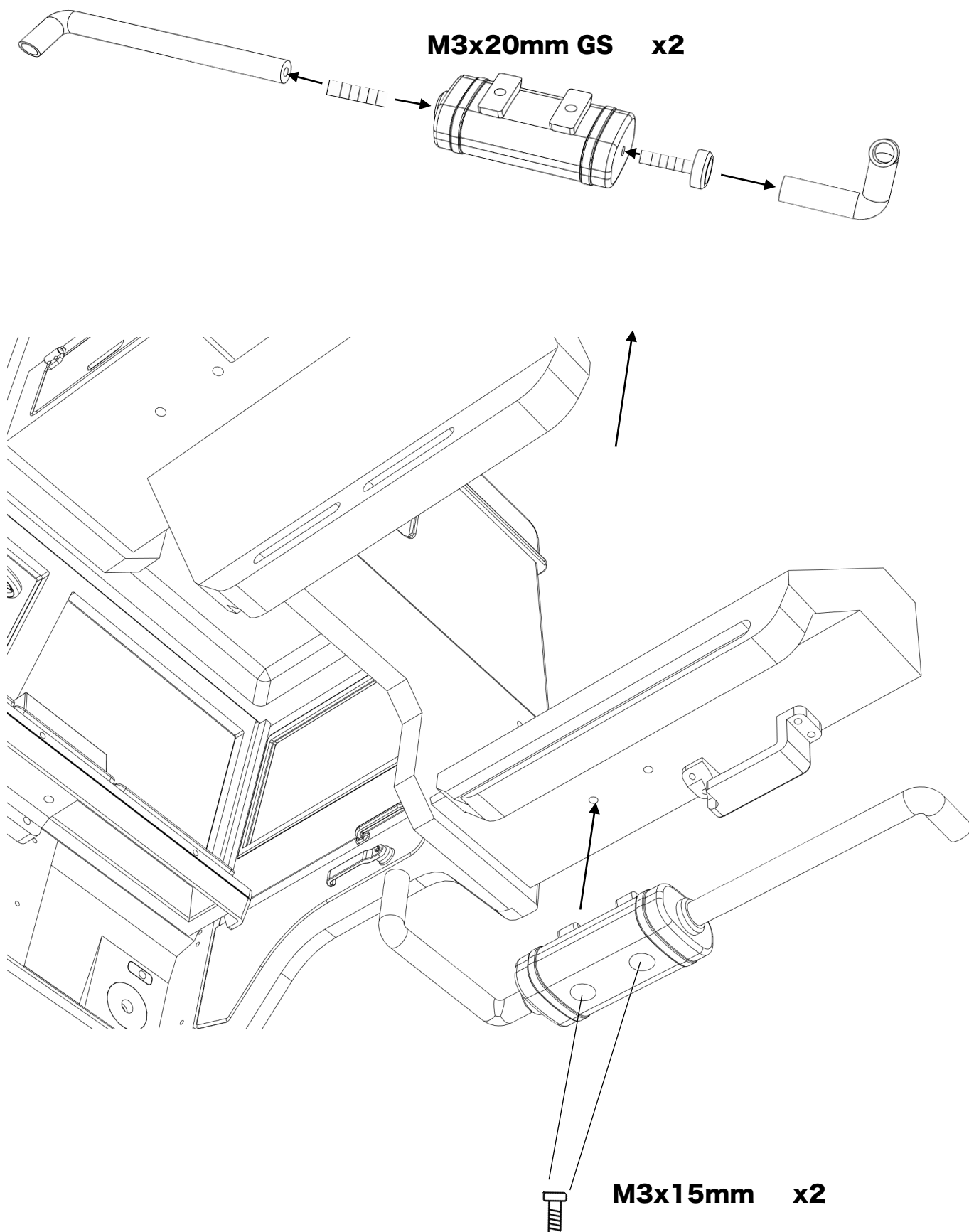
**Repeat on all
storage covers for
both mounts**



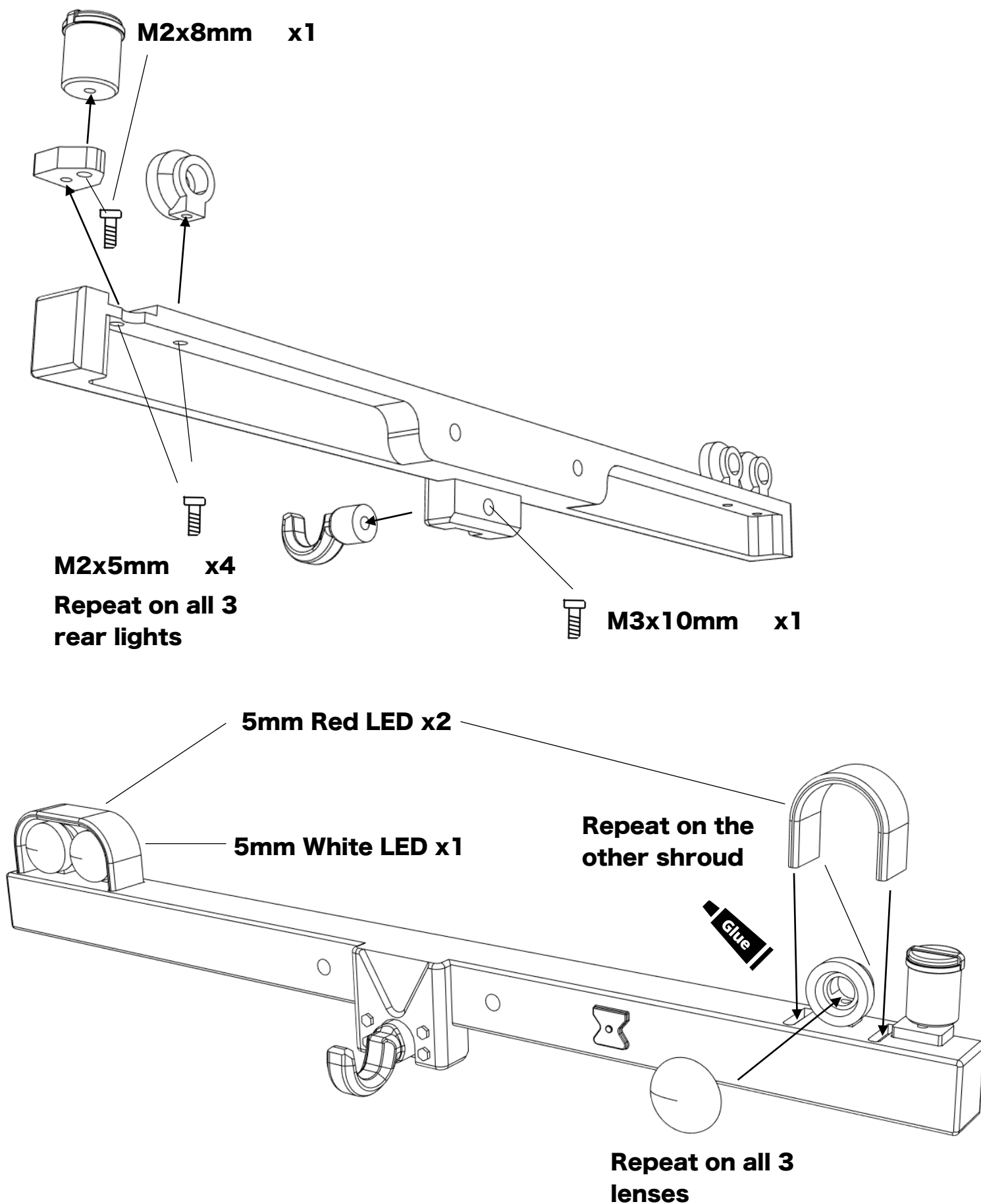
**Repeat on all
storage hinges for
both mounts**

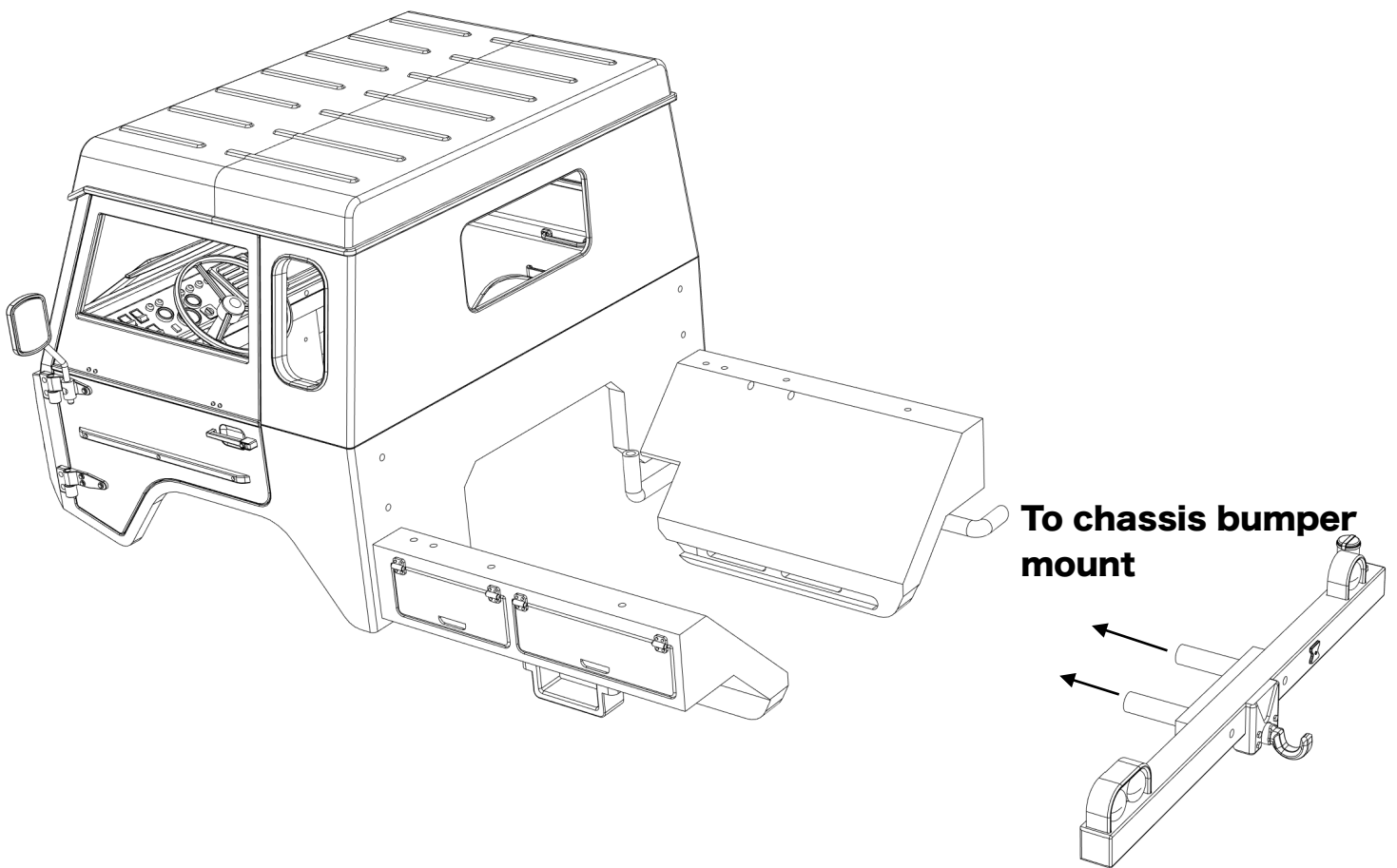
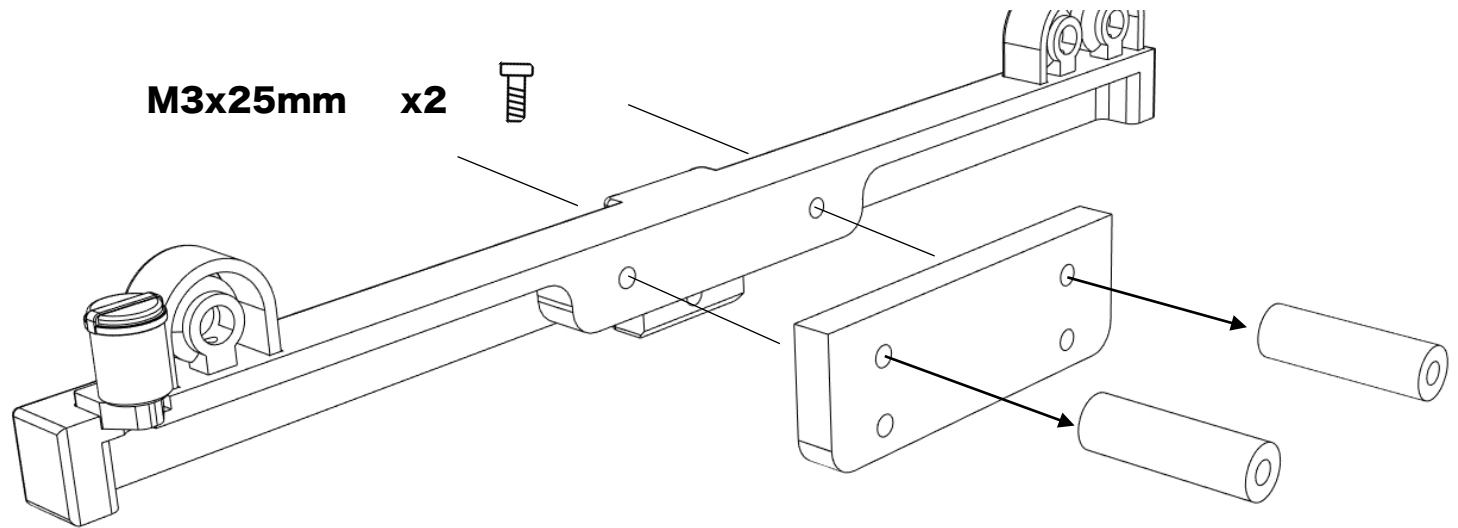


Assembling and installing the exhaust

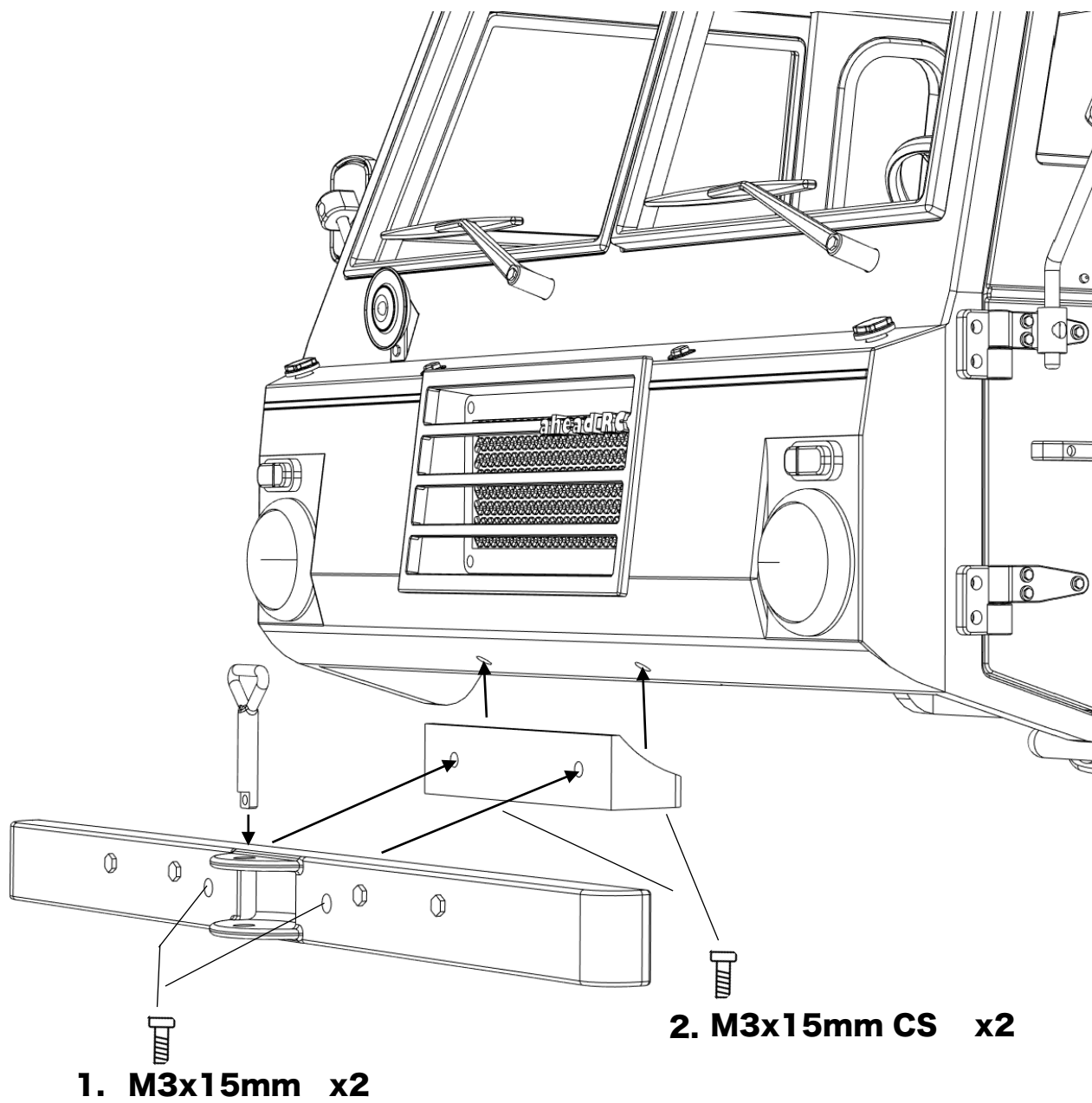


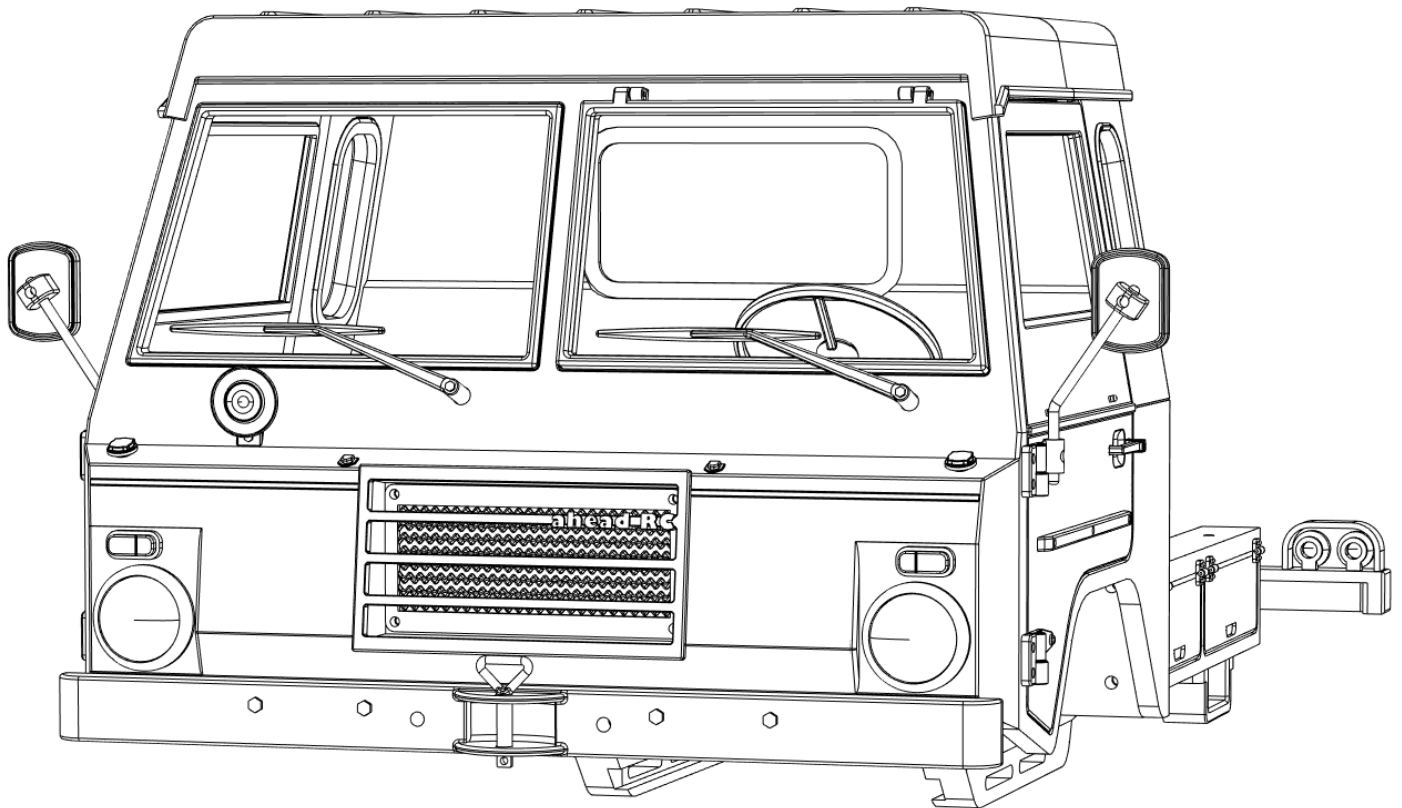
Assembling and installing the rear bumper





Assembling and installing the front bumper





Body is now fully complete. Thank you for selecting ahead RC products.

If you have any questions or need help with the assembly, please do not hesitate to contact us at:

aheadrc@gmail.com

or visit us at:

www.aheadrc.com

Best of luck with your build!